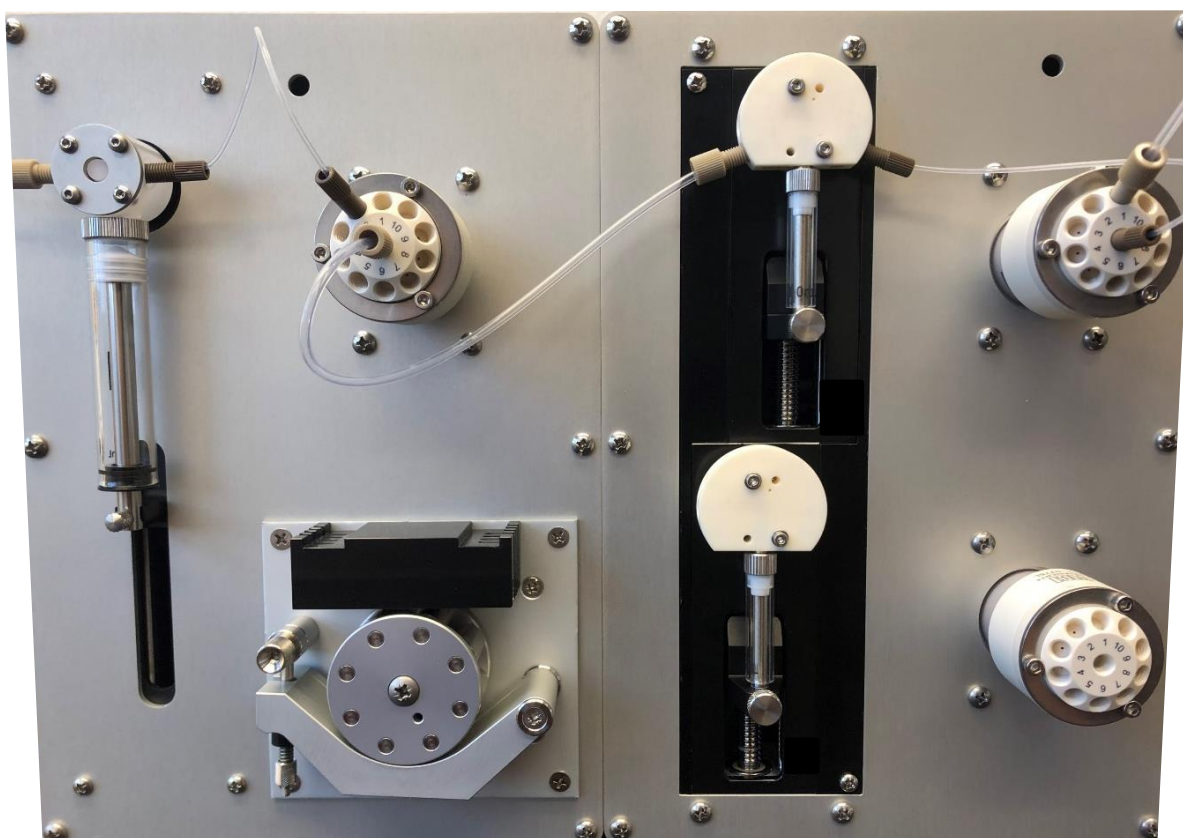


ProSIAmplifier

The Most Advanced On-line Sampling System



The ProSIAmplifier is the world's newest and most advanced Automated On-line Sampling System that offers substantial time savings for liquid-based processes. Eliminate off-line pre-treatment with a fully integrated online sampling and pre-treatment system. The ProSIAmplifier system pulls samples from the bioreactor, then undertakes the required pre-treatment on-line before sending the treated sample to the LC-MS Instrument.

This technology has routinely helped the Bio-pharmaceutical industry automate glycan profiling, peptide mapping and amino acid applications.

Advantages of a FIA Lab System:

- ✓ Automate the most complex pre-treatment procedures.
- ✓ Unified, simultaneous and uninterrupted flow achieved.
- ✓ Preconcentrate low titer samples.
- ✓ Protein A in less than 5 minutes.

Software for sophisticated sampling

Seamless and Intuitive

Written in C# and allows for scripting in Python. The scripting capabilities allowing automation for even the most complex pre-treatment procedures.

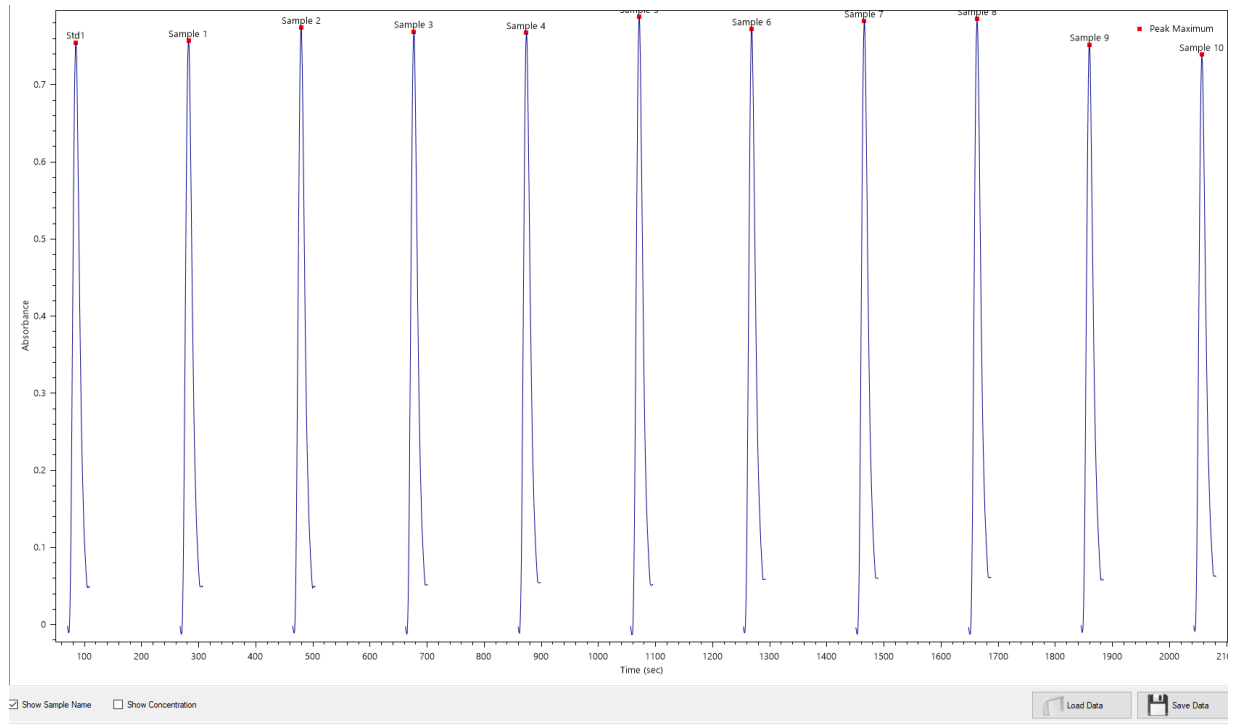
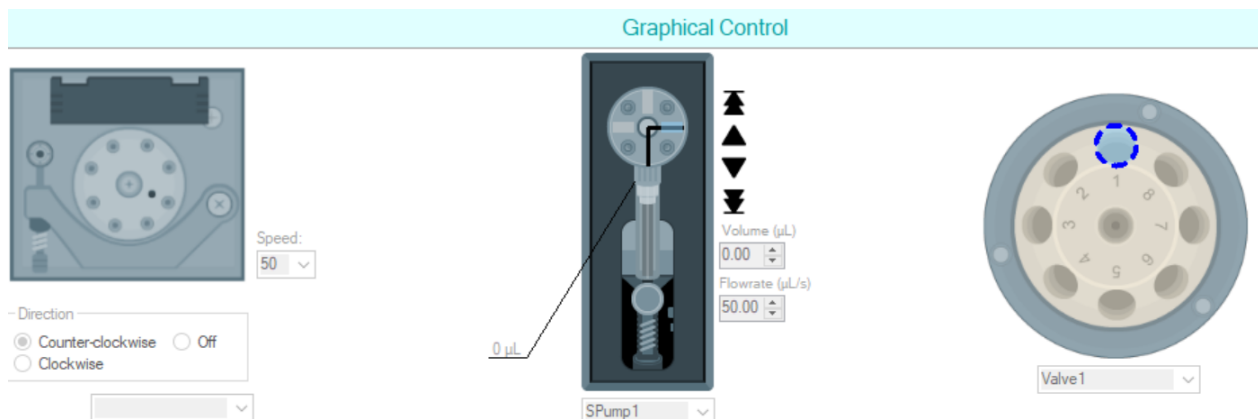


Figure 1 - Example data of 500µg bovine IgG injections measured off a ProA column at 280 nm (2.1% RSD, N = 10).

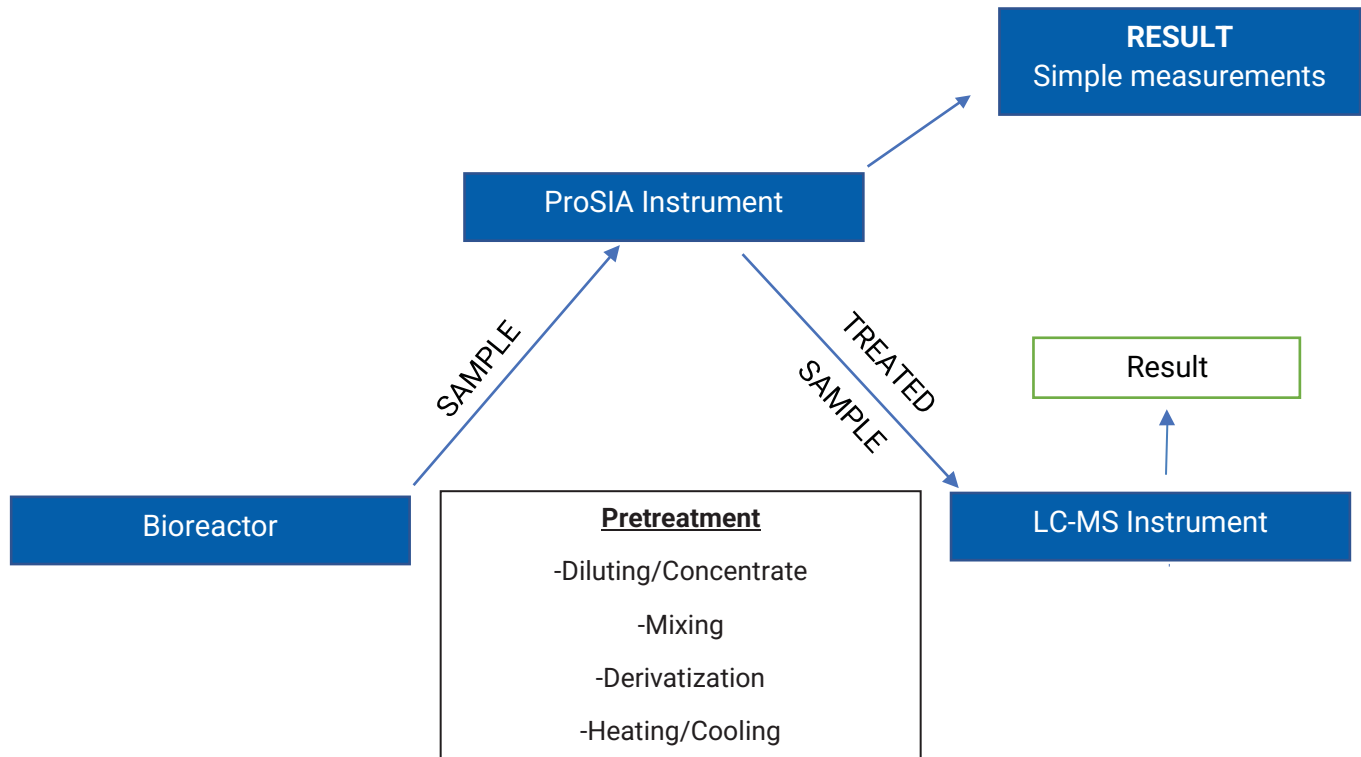
Effortless Modulation

FIALab's flexible software, SIAsoft, is able to accommodate multiple parameter changes in order to satisfy rapidly evolving fields.



Automation

One platform for any integration



Sampling Solutions

Sample from 1-9 vessels/sample streams. Withdraw cell free or whole cell samples.
 Sample line is cleaned and/or sterilized after every sample.

Instrument Integrations

Easily integrate to Agilent, Waters, Beckman-Coulter, Roche, Nova, Thermo and many other instrumentations. Contact sales for a complete list.

SCADA Integrations

- ✓ Satorius BioPAT® MFCS
- ✓ DASGIP SADware
- ✓ Eppendorf BioCommand®
- ✓ Broadley-James BioNet®
- ✓ Emerson Delta V
- ✓ Other devices and SCADA available upon request

Various communication interfaces including TCP/IP, Serial RS-232, Analog I/O and OPC

Specifications

Analyzer	
Type	Sequential Injection Analyzer
Enclosure Material	Aluminum (powder-coated / anodized)
Syringe Pumps	
Type	XCalibur high-precision syringe pump
Wetted Materials	Glass, Teflon®, PCTFE
Syringe Sizes	50, 100, 250, 500 uL and 1.0, 2.5, 5.0 mL
Resolution	24,000 steps per full stroke
Speed	1.2s – 20 min per full stroke
Peristaltic Pump	
Type	2-channel peristaltic, common pressure plate
Materials	Delrin, Stainless Steel
Tubing Type	Elastic tubing with 1 mm wall thickness
Flow Rate	0.5-2.0 mL/min per channel with 1 mm ID tubing 2.0-8.0 mL/min per channel with 2 mm ID tubing
Valve	
Type	8-port multi-position selector valve. 6-port and 10-port also available. Optional Lab-on-Valve® manifold- Ultem® or Plexiglas.
Wetted Materials	PPS, Valcon E2, Ultem®, Plexiglas
Port Type	Flat-bottom ¼-28
Relay Output	
Voltage	24 V
Current	Max 4 mA
Dimensions	
Height	31 cm / 13.5 in
Width	16 cm / 7 in
Depth	29 cm / 11.5 in
Weight	8 kg / 17 lb
Communication	
Type	USB
Control Options	SIAsoft – FIAlab's proprietary software
Power Requirements	
Voltage	24 V DC
Current	Man 2.5 A

FIAlab Instruments, Inc.
 (206) 258 2290
 sales@flowinjection.com
 2151 N Northlake Way, Ste 100
 Seattle, WA 98103
 www.flowinjection.com

Specifications

Analyzer	
Type	Sequential Injection Analyzer
Enclosure material	Aluminum (powder-coated / anodized)
Peristaltic Pump	
Type	4-channel peristaltic, common pressure plate
Materials	Aluminum, stainless steel
Tubing type	2-stop elastic tubing
Flow rate	0.5-5.0 mL/min per channel (1.02 mm ID tubing) 0.3-2.8 mL/min per channel (0.76 mm ID tubing)
Syringe Pump	
Type	High-precision syringe pump
Wetted materials	Glass, Teflon®, PCTFE
Syringe sizes	50 µL, 100 µL, 250 µL, 500 µL, 1.0 mL, 2.5 mL, 5.0 mL, 10 mL, and 25 mL
Resolution	48,000 steps per full stroke
Speed	1.2 sec – 20 min per full stroke
Port type	Flat-bottom ¼-28
Valve	
Type	8-port multiposition selector valve. 6-port and 10-port also available. Optional Lab on Valve® manifold for 6- and 8-port valves.
Wetted materials	PPS, Valcon E2 (proprietary reinforced PTFE composite). In the case of Lab on Valve® manifold also Ultem® or Plexiglas.
Port type	Flat-bottom ¼-28
Relay output	
Voltage	24 V
Current	Max 4 mA
Dimensions	
Height	31 cm / 13.5 in
Width	16 cm / 7 in
Depth	29 cm / 11.5 in
Weight	8 kg / 17 lb
Communication	
Type	USB
Control options	SIAsoft software
Power requirements	
Voltage	24 VDC
Current	max 3.75 A

FIAlab Instruments, Inc.
 (206) 258 2290
 sales@flowinjection.com
 2151 N Northlake Way, Ste 100
 Seattle, WA 98103
 www.flowinjection.com