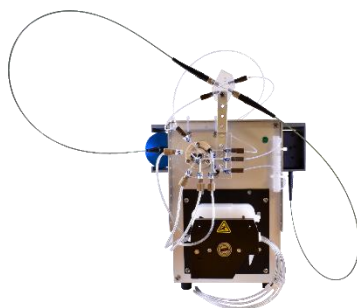


## FIAlyzer-1000





Analyzer	
Type:	Single Channel Flow Injection Analyzer
Enclosure material:	Aluminum (gray powder-coated / anodized)
Peristaltic Pump	
Type:	4-channel peristaltic, individual pressure plates
Materials:	Aluminum, stainless steel
Tubing type:	3-stop elastic tubing (Tygon, Pharmed etc)
Flow rate:	0.5-5.0 mL/min per channel (1.02 mm ID tubing) 0.3-2.8 mL/min per channel (0.76 mm ID tubing)
Valve	
Type:	6-port; Two Position Injection Valve
Wetted materials:	Plexiglas, Valcon E2 (proprietary reinforced PTFE composite)
Port type:	Flat-bottom ¼-28
Relay output	
Voltage:	24 V
Current:	Max 4mA
Dimensions	
Height:	9 in (23 cm)
Width:	6 in (15 cm)
Depth:	7 in (18 cm)
Weight:	10 lb (4.5 kg)
Communication	
Input:	USB
Output:	1 Serial RS-485 port
Control options:	FIAsoft software
Power requirements	
Voltage:	24 Vdc
Current:	2.5 A

FIALab Instruments, Inc.  
2151 N Northlake Way  
Seattle, WA 98103 USA

Telephones: +1 206 258 2290  
+1 800 963 1101  
Email: sales@flowinjection.com